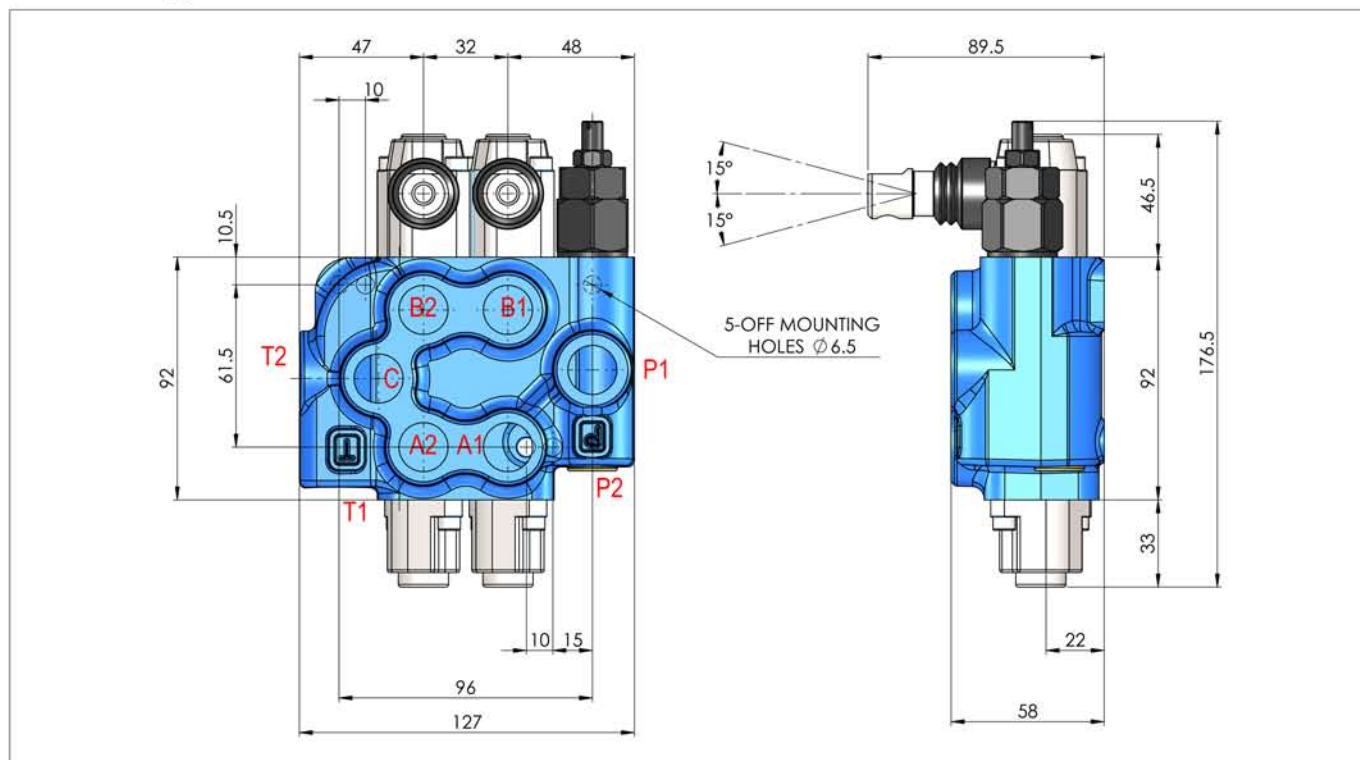
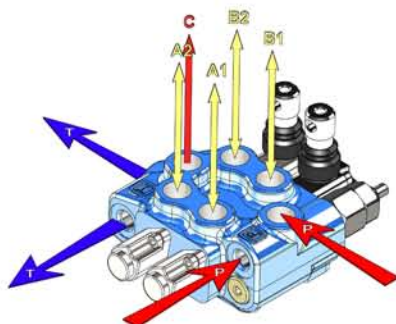


MONOBLOCK VALVES

MB1 Range



Part No	X (mm)	Y (mm)	Inlet P	A & B	Outlet T & C
MB1/1	95	64	3/8 BSP	1/4 BSP	3/8 BSP
MB1/2	127	96	3/8 BSP	1/4 BSP	3/8 BSP
MB1/3	159	128	3/8 BSP	1/4 BSP	3/8 BSP
MB1/4	191	160	3/8 BSP	1/4 BSP	3/8 BSP
MB1/5	223	192	3/8 BSP	1/4 BSP	3/8 BSP
MB1/6	255	224	3/8 BSP	1/4 BSP	3/8 BSP



Note!

When using the pressure carry over facility you must install the plug provided inside the carry over port and the tank port must also be connected as normal.

Nominal Flow Rate		25 L/min
Operating Pressure (Max)	Parallel or tandem circuit	315 bar
	Series circuit	210 bar
Back Pressure (Max)	On outlet port T	25 bar
Fluid Temp Range	With NBR (BUNA-N) seals	From -20°C to 80°C
Viscosity	Min	12 cst
	Max	400 cst
Ambient Temp Range		From -40°C to 60°C